

# TRENDS

## IN MARITIME HIGHER EDUCATION

Volume 10 Number 2

-Annual Digest-

May 2013

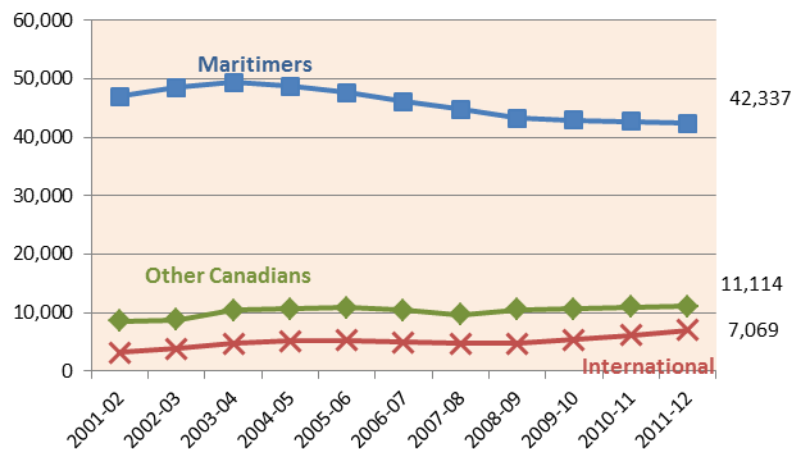
### UNIVERSITY ENROLMENT - 2011-2012

#### Highlights

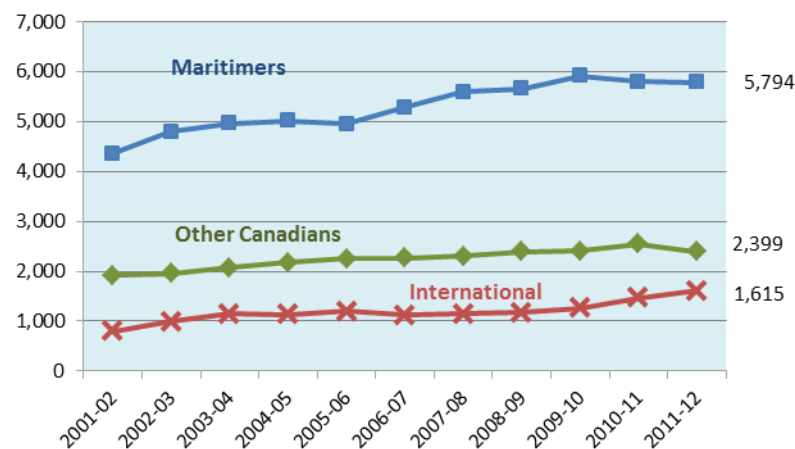
- ⇒ In 2011-12, total enrolment in Maritime universities increased for a third year in a row to 70,328 students.
- ⇒ International students continued to be the primary source of enrolment growth, increasing by more than 1000 students, or 15%, since 2010-11.
- ⇒ The number of Canadian students from outside the Maritimes did not change since 2010-11, but grew 29% over the last 10 years.
- ⇒ At the undergraduate level, the number of students from the Maritimes enrolled in the region's universities continued to decrease (-0.8% since 2010-11). Since 2001-02, the number who are from New Brunswick dropped by 1,575 (a 9% decrease) and from Nova Scotia, 3,468 (a 14% decrease). During the same period, the number of undergraduate students from Prince Edward Island increased by 422 students or 11%.
- ⇒ The number of graduate students in Maritime universities has grown by 38% over the last 10 years. Despite a decrease in the number of Maritimers at the undergraduate level, their numbers have increased by 1,428 (+33%) at the graduate level since 2001-02.
- ⇒ Trends in enrolment at the graduate level vary among the provinces:
  - ◆ In New Brunswick universities the number of graduate students grew by 51% since 2001-02 and continues to increase.
  - ◆ In Nova Scotia the number of graduate students increased 32% since 2001-02, but decreased slightly in 2011-12.
  - ◆ In Prince Edward Island, graduate enrolment increased by 142% since 2001-02, but decreased slightly in 2011-12.

#### ENROLMENT BY PROGRAM TYPE AND STUDENT ORIGIN

Undergraduate enrolment



Graduate enrolment

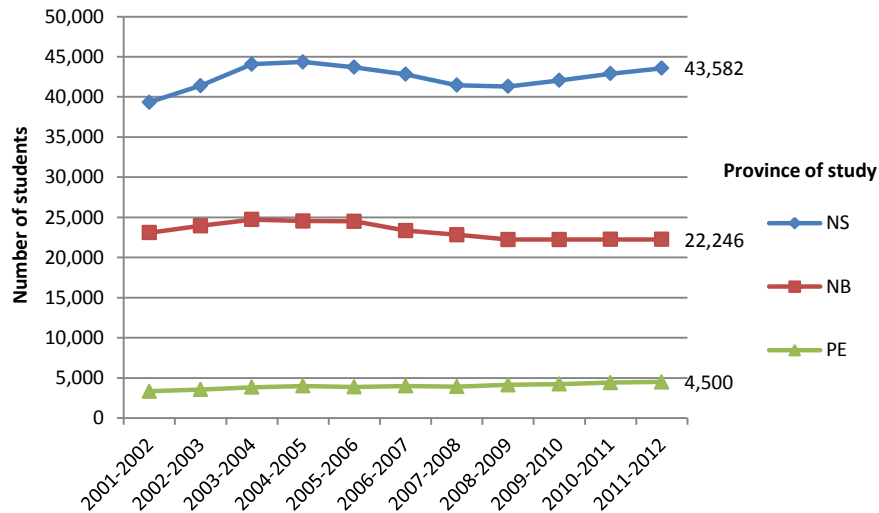


## How to read the tables

Enrolment statistics are reported at the provincial and Maritime-level for the 2011-12 fall term. The percent change over one, five and 10 years (change since 2010-11, 2006-07 and 2001-02 respectively) is provided to illustrate major trends. Below each summary table is a link to a corresponding table on the MPHEC website with a breakdown by university and/or other variables.

The statistics may not be comparable to previous years which included international students enrolled in off-shore programs offered by a Maritime university. The 2011-12 statistics exclude students studying in off-shore programs.

### TOTAL ENROLMENT



TOTAL ENROLMENT	Enrolment		Change over	
	2011-2012	1 year	5 years	10 years
New Brunswick	22,246	0.0%	-4.7%	-3.7%
Nova Scotia	43,582	1.6%	1.8%	10.8%
Prince Edward Island	4,500	1.9%	12.3%	35.0%
<b>Maritimes</b>	<b>70,328</b>	<b>1.1%</b>	<b>0.2%</b>	<b>7.0%</b>

Table 1: Total Enrolment by Province, Institution, and Registration Status

FULL-TIME EQUIVALENTS (DECEMBER 1 <sup>ST</sup> )	FTE		Change over	
	2011-2012	1 year	5 years	10 years
New Brunswick	19,248.61	1.0%	-3.9%	-1.4%
Nova Scotia	37,809.95	2.3%	3.4%	14.6%
Prince Edward Island	3,880.67	2.1%	11.7%	36.0%
<b>Maritimes</b>	<b>60,939.23</b>	<b>1.9%</b>	<b>1.5%</b>	<b>10.1%</b>

Table 4: Total Full-Time Equivalent (FTE) as of December 1st, by Province, Institution, and Registration Status

TOTAL UNDERGRADUATE ENROLMENT		Enrolment		Change over	
		2011-2012	1 year	5 years	10 years
New Brunswick	<b>Total</b>	<b>19,643</b>	<b>-0.3%</b>	<b>-7.3%</b>	<b>-8.1%</b>
	Full-time	16,842	1.3%	-5.2%	-4.1%
	Part-time	2,801	-8.6%	-18.6%	-26.4%
Nova Scotia	<b>Total</b>	<b>36,706</b>	<b>2.1%</b>	<b>0.5%</b>	<b>7.6%</b>
	Full-time	32,084	2.9%	2.5%	12.4%
	Part-time	4,622	-3.5%	-11.7%	-17.0%
Prince Edward Island	<b>Total</b>	<b>4,171</b>	<b>2.3%</b>	<b>10.7%</b>	<b>30.5%</b>
	Full-time	3,473	1.6%	9.4%	29.3%
	Part-time	698	5.6%	17.3%	36.9%
Maritimes	<b>Total</b>	<b>60,520</b>	<b>1.3%</b>	<b>-1.6%</b>	<b>3.2%</b>
	Full-time	52,399	2.3%	0.3%	7.4%
	Part-time	8,121	-4.6%	-12.4%	-17.9%

Table 2: Total Undergraduate Enrolment by Province, Institution, and Registration Status

TOTAL GRADUATE ENROLMENT		Enrolment		Change over	
		2011-2012	1 year	5 years	10 years
New Brunswick	<b>Total</b>	<b>2,603</b>	<b>1.8%</b>	<b>20.8%</b>	<b>50.7%</b>
	Full-time	1,525	-0.8%	5.6%	35.9%
	Part-time	1,078	5.8%	51.8%	78.2%
Nova Scotia	<b>Total</b>	<b>6,876</b>	<b>-0.8%</b>	<b>9.3%</b>	<b>31.7%</b>
	Full-time	4,014	-0.4%	14.5%	50.1%
	Part-time	2,862	-1.4%	2.8%	12.4%
Prince Edward Island	<b>Total</b>	<b>329</b>	<b>-2.4%</b>	<b>37.7%</b>	<b>141.9%</b>
	Full-time	288	11.2%	44.0%	300.0%
	Part-time	41	-47.4%	5.1%	-35.9%
Maritimes	<b>Total</b>	<b>9,808</b>	<b>-0.2%</b>	<b>13.0%</b>	<b>38.4%</b>
	Full-time	5,827	0.0%	13.2%	50.6%
	Part-time	3,981	-0.5%	12.7%	23.8%

Table 3: Total Graduate Enrolment by Province, Institution, and Registration Status

HOME PROVINCE ENROLMENT <sup>1</sup>		Enrolment	Change over		
		2011-2012	1 year	5 years	10 years
New Brunswick	<b>Total</b>	<b>15,559</b>	<b>-1.5%</b>	<b>-6.9%</b>	<b>-6.6%</b>
	Undergraduate	13,958	-1.6%	-9.1%	-10.2%
	Graduate	1,601	-0.1%	17.4%	43.3%
Nova Scotia	<b>Total</b>	<b>23,364</b>	<b>-0.9%</b>	<b>-7.5%</b>	<b>-10.4%</b>
	Undergraduate	20,173	-0.8%	-8.8%	-13.8%
	Graduate	3,191	-1.9%	1.5%	20.3%
Prince Edward Island	<b>Total</b>	<b>3,243</b>	<b>2.1%</b>	<b>4.7%</b>	<b>23.3%</b>
	Undergraduate	3,026	1.6%	1.3%	19.4%
	Graduate	217	10.7%	93.8%	126.0%
Maritimes	<b>Total</b>	<b>48,131</b>	<b>-0.8%</b>	<b>-6.3%</b>	<b>-6.2%</b>
	Undergraduate	42,337	-0.9%	-8.1%	-9.8%
	Graduate	5,794	-0.2%	9.5%	32.7%
Maritimers studying in any Maritime university	Undergraduate	42,337	-0.9%	-8.1%	-9.8%
	Graduate	5,794	-0.2%	9.5%	32.7%

<sup>1</sup> Canadian students whose province of origin is the same as their province of study

Table 7: Total Enrolment by Province of Study, Immigration Status, Province of Residence, and Level of Study

ENROLMENT BY GENDER		2011-2012	1 year	5 years	10 years
New Brunswick	Female	12,824	-1.8%	-7.2%	-5.7%
	Male	9,403	2.6%	-1.3%	-0.9%
Nova Scotia	Female	25,359	1.1%	-0.2%	8.7%
	Male	18,187	2.2%	4.7%	13.6%
Prince Edward Island	Female	2,831	1.9%	8.6%	29.1%
	Male	1,669	2.0%	19.1%	46.4%
Maritimes	Female	41,014	0.3%	-1.9%	4.8%
	Male	29,259	2.3%	3.4%	9.9%

Students with gender "not reported" are excluded

Table 8: Total Enrolment by Province, Institution, and Gender

Table 9: Total Enrolment by Province, Field of Study, and Gender

FULL-TIME ENROLMENT BY AGE GROUP		2011-2012	1 year	5 years	10 years
New Brunswick	19 or younger	5,804	0.4%	2.0%	-7.7%
	20-24 years old	9,458	2.1%	-7.0%	-0.2%
	25 or older	3,104	-0.4%	-6.2%	7.9%
Nova Scotia	19 or younger	9,915	2.6%	5.7%	8.5%
	20-24 years old	19,027	3.6%	2.6%	20.4%
	25 or older	7,137	-0.3%	4.1%	14.7%
Prince Edward Island	19 or younger	1,116	3.5%	11.0%	22.6%
	20-24 years old	1,895	1.2%	11.4%	39.0%
	25 or older	750	3.4%	12.6%	54.3%
Maritimes	19 or younger	16,835	1.9%	4.7%	3.1%
	20-24 years old	30,380	2.9%	-0.1%	14.1%
	25 or older	10,991	-0.1%	1.5%	14.7%

Students with age "not reported" are excluded

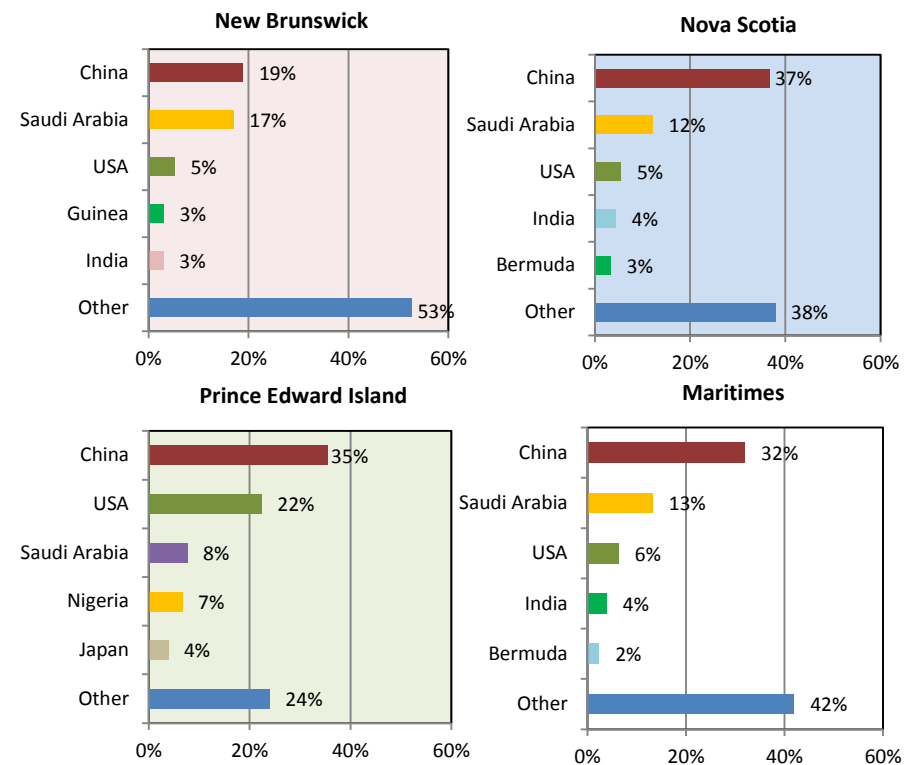
Table 10: Full-time Enrolment by Province, Institution, and Age Group

ENROLMENT OF INTERNATIONAL STUDENTS		Enrolment	Change over		
STUDENTS		2011-2012	1 year	5 years	10 years
New Brunswick	<b>Total</b>	<b>2,325</b>	<b>13.0%</b>	<b>20.6%</b>	<b>56.0%</b>
	Undergraduate	1,786	14.6%	15.2%	43.8%
	Graduate	539	8.2%	43.0%	117.3%
Nova Scotia	<b>Total</b>	<b>5,863</b>	<b>15.7%</b>	<b>49.9%</b>	<b>150.0%</b>
	Undergraduate	4,825	16.9%	51.2%	166.9%
	Graduate	1,038	10.7%	44.2%	93.3%
Prince Edward Island	<b>Total</b>	<b>496</b>	<b>9.7%</b>	<b>94.5%</b>	<b>259.4%</b>
	Undergraduate	458	9.8%	102.7%	281.7%
	Graduate	38	8.6%	31.0%	111.1%
Maritimes	<b>Total</b>	<b>8,684</b>	<b>14.6%</b>	<b>42.5%</b>	<b>118.6%</b>
	Undergraduate	7,069	15.8%	42.3%	123.0%
	Graduate	1,615	9.8%	43.4%	101.1%

Excludes students enrolled in offshore programs

Table 5: Enrolment of International Students by Province, Institution, Req. Status, and % of Total

#### TOP FIVE COUNTRIES OF ORIGIN OF INTERNATIONAL STUDENTS



ENROLMENT BY MAJOR FIELD OF STUDY <sup>1</sup>	Enrolment		Change over	
	2011-2012	1 year	5 years	10 years
<b>New Brunswick</b>				
Arts or Science - General	4,825	0.2%	-1.8%	6.5%
Agricultural and Biological Sciences	942	-1.1%	-3.3%	4.3%
Commerce and Administration	3,091	6.5%	-2.5%	-10.8%
Education, Physical Education, Recreation and Leisure	2,463	-9.5%	-20.8%	-3.6%
Engineering and Applied Sciences	2,305	10.4%	4.4%	10.3%
Fine and Applied Arts	336	5.0%	8.7%	0.3%
Health Professions and Occupations	2,117	-1.4%	9.0%	20.1%
Humanities and Related	1,293	-4.7%	-9.2%	0.0%
Mathematics and Physical Sciences	879	11.3%	5.9%	-39.2%
Social Sciences and Related	2,556	0.4%	-3.8%	-2.4%
Not applicable/Not reported	1,439	-10.9%	-20.6%	-31.3%
<b>Nova Scotia</b>				
Arts or Science - General	7,226	0.4%	5.2%	6.7%
Agricultural and Biological Sciences	3,254	5.5%	8.4%	25.4%
Commerce and Administration	8,033	2.4%	12.1%	19.6%
Education, Physical Education, Recreation and Leisure	4,198	-0.4%	-2.4%	16.3%
Engineering and Applied Sciences	2,650	5.5%	37.6%	43.8%
Fine and Applied Arts	1,236	-3.5%	-8.8%	7.3%
Health Professions and Occupations	4,403	3.3%	10.7%	38.2%
Humanities and Related	2,775	-2.7%	-21.5%	-2.2%
Mathematics and Physical Sciences	1,816	5.8%	-1.0%	-21.1%
Social Sciences and Related	6,046	2.3%	-9.9%	5.7%
Not applicable/Not reported	1,945	-4.2%	-8.9%	-25.2%
<b>Prince Edward Island</b>				
Arts or Science - General	949	-1.2%	11.6%	5.2%
Agricultural and Biological Sciences	774	5.0%	26.1%	46.9%
Commerce and Administration	818	0.6%	13.5%	37.9%
Education, Physical Education, Recreation and Leisure	402	-6.3%	34.0%	66.8%
Engineering and Applied Sciences	104	10.6%	9.5%	35.1%
Fine and Applied Arts	39	-2.5%	14.7%	8.3%
Health Professions and Occupations	290	-0.7%	14.2%	68.6%
Humanities and Related	264	-3.3%	-17.8%	16.3%
Mathematics and Physical Sciences	214	1.4%	13.8%	81.4%
Social Sciences and Related	398	3.6%	4.2%	105.2%
Not applicable/Not reported	248	37.0%	-0.4%	0.8%

<sup>1</sup> All levels of study combined

Table 6: Total Enrolment by Province, Major Field of Study, and Level of Study

ENROLMENT BY MAJOR FIELD OF STUDY	Enrolment		Change over	
	2011-2012	1 year	5 years	10 years
<b>Maritimes</b>				
Arts or Science - General	13,000	0.2%	2.9%	6.5%
Agricultural and Biological Sciences	4,970	4.1%	8.3%	23.5%
Commerce and Administration	11,942	3.3%	8.0%	10.9%
Education, Physical Education, Recreation and Leisure	7,063	-4.1%	-8.4%	10.2%
Engineering and Applied Sciences	5,059	7.8%	19.6%	26.2%
Fine and Applied Arts	1,611	-1.8%	-5.1%	5.8%
Health Professions and Occupations	6,810	1.6%	10.3%	33.0%
Humanities and Related	4,332	-3.4%	-17.9%	-0.6%
Mathematics and Physical Sciences	2,909	7.0%	2.0%	-24.7%
Social Sciences and Related	9,000	1.8%	-7.7%	5.5%
Not applicable/Not reported	3,632	-5.1%	-13.5%	-26.5%

### Additional Resources

Ten standard tables and two Microsoft Excel databases, with a breakdown by university and other variables, are available for download at: <http://www.mphec.ca/research/enrolment.aspx>

University enrolments are obtained from the MPHEC postsecondary student information system (PSIS) database, which contains detailed information on demographics, programs and courses for all students enrolled in 15 publicly-funded Maritime universities.

For further information, please contact:

**Maritime Provinces Higher Education Commission**

**P.O. Box 6000**

**401-82 Westmorland Street**

**Fredericton, NB E3B 5H1**

**Telephone: (506) 453-2844**

**Fax: (506) 453-2106**

**E-mail: [mphec@mphec.ca](mailto:mphec@mphec.ca)**

**Web: [www.mphec.ca](http://www.mphec.ca)**