

**SURVEYING THE ENROLMENT LANDSCAPE:
UPDATE OF SELECTED TABLES AND FIGURES**

JUNE 2008

Maritime Provinces Higher
Education Commission



Commission de l'enseignement
supérieur des provinces maritimes

INTRODUCTION

In the fall of 2006, an unexpected decline in undergraduate enrolment in Maritime Universities prompted the Commission's stakeholders to call for an analysis of enrolment trends and related data. In June 2007, the results were published in the *Trends in Maritime Higher Education* series. Considering the importance of the results for the region, the Commission is updating key figures and related tables from *Surveying the Enrolment Landscape: Factors and Trends in Maritime University Enrolment*. The June 2007 publication covered validated enrolments between 2000-2001 and 2005-2006 (with some other data sources up to 2006-2007); this update includes validated enrolment data up to 2006-2007, with some other data sources up to 2007-2008.

Overall, we note that the trends observed in 2007 continue on most fronts, including decreasing enrolment and an increase in the number of Maritimers studying outside the region. In addition, the 18-24 population in the region continues its predicted decline.

HIGHLIGHTS

- In 2007, preliminary numbers indicated that total undergraduate enrolment in Maritime universities dropped 3.2%, from 2006. By province, the change in total undergraduate enrolments from 2006 was: New Brunswick -3.5%, Nova Scotia -3.1% and Prince Edward Island -1.9%.
- The number of undergraduate students in the ≤ 19 age cohort originally from the Maritimes was 5% lower in 2006-2007 than in 2000-2001 and 4% lower compared to 2005-2006. By province, the change in the number of these students from 2005-2006 to 2006-2007 was: New Brunswick -6%, Nova-Scotia -4% and Prince Edward Island -1%.
- Based on validated enrolment data, the number of undergraduate students from outside the region declined in 2006-2007, mainly due to fewer students from Newfoundland and Labrador (54% drop between 2000-2001 and 2006-2007; -1316 students) and from outside Canada attending Maritime universities. After a steady increase in the number of undergraduate students from outside the country (+94% between 2000-2001 and 2005-2006), the numbers declined in 2006-2007 compared to the previous year (-3%; -169 students).
- The number of Maritimers attending universities outside the region has continued to increase (+12%, between 2005-2006 and 2006-2007). The largest change has been at the Memorial University of Newfoundland where the enrolment of Maritimers increased 15% in 2007-2008 over the previous year, and increased more than 10-fold in seven years (from 103 Maritimers in 1999-2000, to 1170 in 2007-2008).
- While university participation has increased for residents of New Brunswick and Prince Edward Island between 2002-2003 and 2006-2007, the university participation rate of Nova Scotians in Canadian universities has declined by 1.5 percentage points over the same period.
- Community college enrolment continued to increase in Nova Scotia (+6% in 2007-2008 over the previous year, and 33% over the last 7 years), but has changed very little in New Brunswick (+0.6% between 2000-2001 and 2006-2007) and has dropped in Prince Edward Island (-2% between 2000-2001 and 2006-2007).
- The Maritime 18-24 year old population continues to follow its predicted decline. Between 2005 and 2007, the actual change was a 2% decrease in that age group.

TABLE OF CONTENTS

Notes	4
Sources	4

List of Figures

Figure 1	Total undergraduate enrolment in Maritime Universities.....	5
Figure 2	Enrolment of undergraduate students ≤ 19 years of age in Maritime Universities.....	5
Figure 3	Origin of undergraduate students from outside the Maritimes enrolled in Maritime Universities	6
Figure 4	Change in university-age population (18-24 year olds).....	6
Figure 5	Undergraduate students from the Maritimes enrolled full-time (FT) at the Memorial University of Newfoundland (MUN) and tuition fees.....	7
Figure 6a	Participation rates in Maritime Universities	8
Figure 6b	University participation rates of Maritime residents in Canadian Universities.....	8
Figure 7	Enrolment at Maritime community colleges.....	9
Figure 8	University-age population and full-time enrolment in Maritime Universities (all-levels)	9

List of Tables

Table 1	Undergraduate enrolment by Province and university in the Maritimes: 2000-2001 to 2006-2007.....	10
Table 2	Full-time equivalent (FTE) of undergraduate enrolment by Province and Maritime institution: 2000-2001 to 2006-2007	11
Table 3	Undergraduate enrolment by Province of study, Maritime institution, and permanent Province of origin: 2000-2001 to 2006-2007	12
Table 4	Enrolment of Maritimers in 48 Canadian universities: 2002-2003 to 2006-2007	18
Table 5	Full-time undergraduate enrolment at the Memorial University of Newfoundland by Province of origin: 1997-1998 to 2007-2008	19
Table 6a	Participation rates of University students at Maritime Institutions.....	20
Table 6b	Maritime resident participation rate at 48 of 61 Canadian Universities.....	20

NOTES

The Maritime Provinces Higher Education Commission (MPHEC) enrolment and Full-time equivalent (FTE) data are based on the official count date of December 1st of the academic year.

A full-time undergraduate student is a person enrolled in credit courses and/or program of study who is taking at least 60% of the normal course work associated with a program.

Full-time equivalent (FTE) is a value assigned to each student dependent upon the registration status (full-time or part-time) and level (bachelor's, master's or doctoral) of the student. All full-time students are assigned an FTE of 1.00. Part-time undergraduate students are assigned an FTE of 0.10 for every one semester course and 0.20 for every two-semester course in which they are enrolled. Part-time master's level students are assigned an FTE of 0.33 for the academic year. Part-time doctoral level students are assigned a 1.00 FTE for the academic year.

SOURCES

Enrolment at Maritime Universities:

MPHEC Postsecondary Student Information System (PSIS) final audited data (2000-2001 to 2006-2007)
MPHEC University Student Information System (USIS) data (1990-1991 to 1999-2000)
Association of Atlantic Universities (AAU) 2007-2008 preliminary survey of enrolments

Demographic Statistics:

Canadian Population. Statistics Canada, CANSIM table 051-0001. Estimates of Population by Age and Sex for Canada, Provinces and Territories. Last updated Nov. 28 2007
Population Projections. Statistics Canada, CANSIM table 052-0004. Projected population by projection scenario, sex and age group as of July 1, Canada, provinces and territories. Last updated Dec. 15 2005

Enrolment in Canadian Universities outside the Maritimes:

Memorial University of Newfoundland - Factbooks 1999 to 2007
Université de Sherbrooke, Bureau du registraire – Section exploitation des données
McGill University Enrolment Report, Fall 2003 to Fall 2007
Concordia University, Institutional Planning
Université Laval, Bureau du Registraire
Université de Montréal, Régistrariat, statistiques officielles
Université du Québec, Base de données PRISME, Vice-présidence à l'enseignement et à la recherche
Ontario Universities, Ontario Ministry of training, colleges and Universities, University Student Information System – University Affairs Report (USIS-UAR)
University of Alberta Summary of Statistics (1997 to 2007)
University of Calgary, Fact Book, Office of Institutional Analysis (2001-2002 to 2006-2007)
University of Lethbridge, Facts Books (2004-2005 to 2006-2007)
University of Regina Fact Books, Office of Resource Planning
Simon Fraser University, Fact Book, Office of Analytical Studies

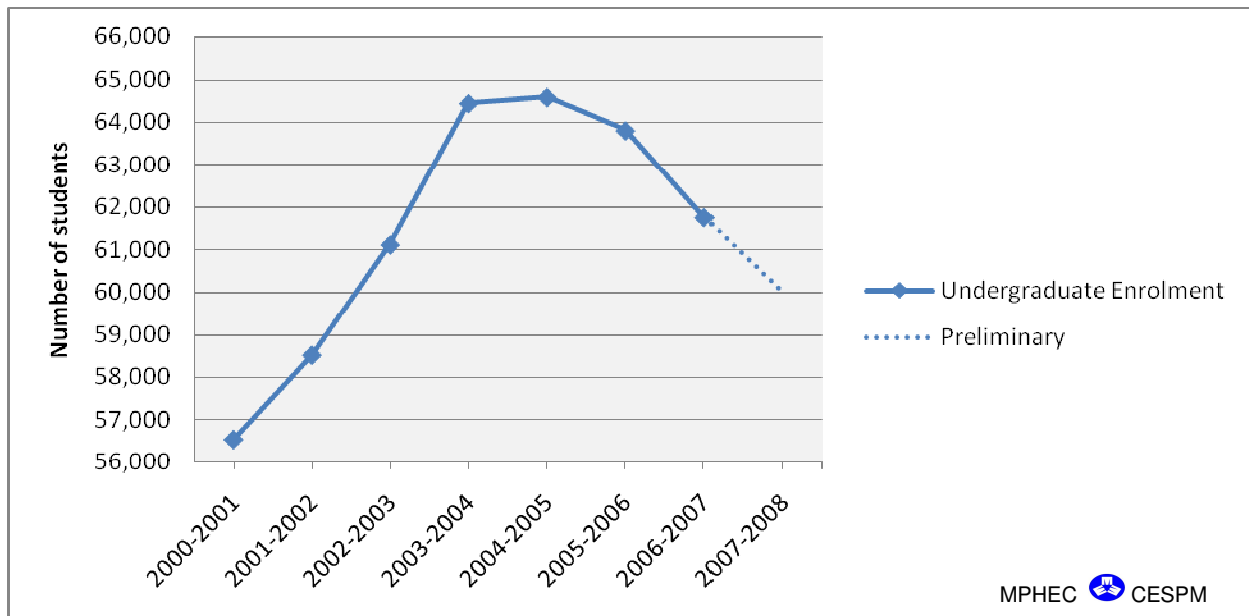
Community College Enrolment:

MPHEC PSIS data for Prince Edward Island (2000-2001 to 2006-2007)
New Brunswick Community College, NBCC Annual report 2006-2007
Nova Scotia Community College (NSCC), Institutional Research & Analysis Office

Tuition and Other Fees:

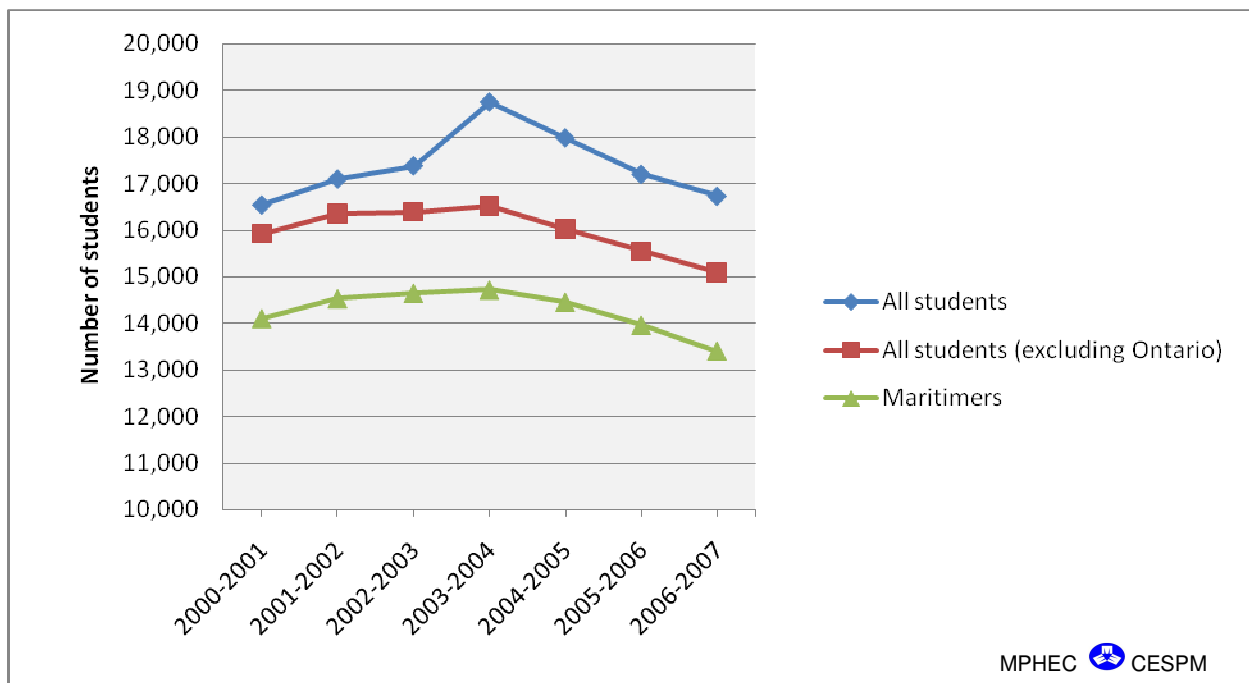
MPHEC Tuition Survey
Association of Atlantic Universities (AAU) Survey of Tuition and Residence Fees

Figure 1 Total undergraduate Enrolment in Maritime Universities



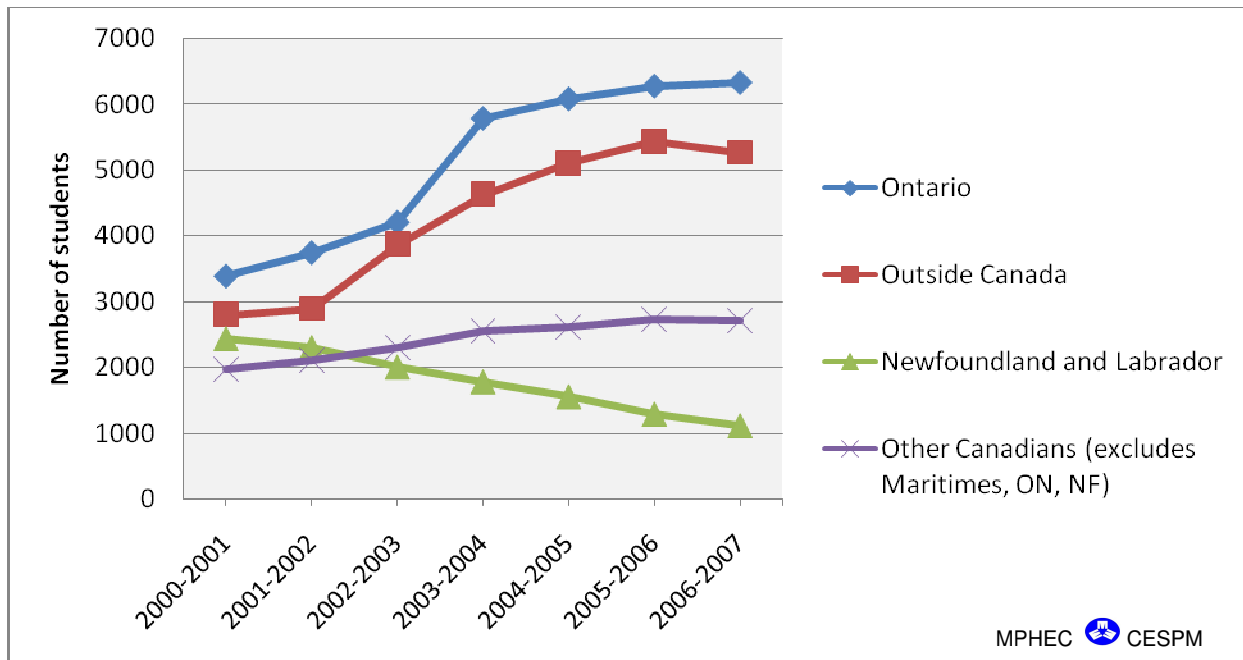
Source: MPHEC PSIS Final Audited data (2000-2001 to 2006-2007); AAU preliminary survey of enrolment (2007-2008)

Figure 2 Enrolment of undergraduate students ≤ 19 years of age in Maritime Universities



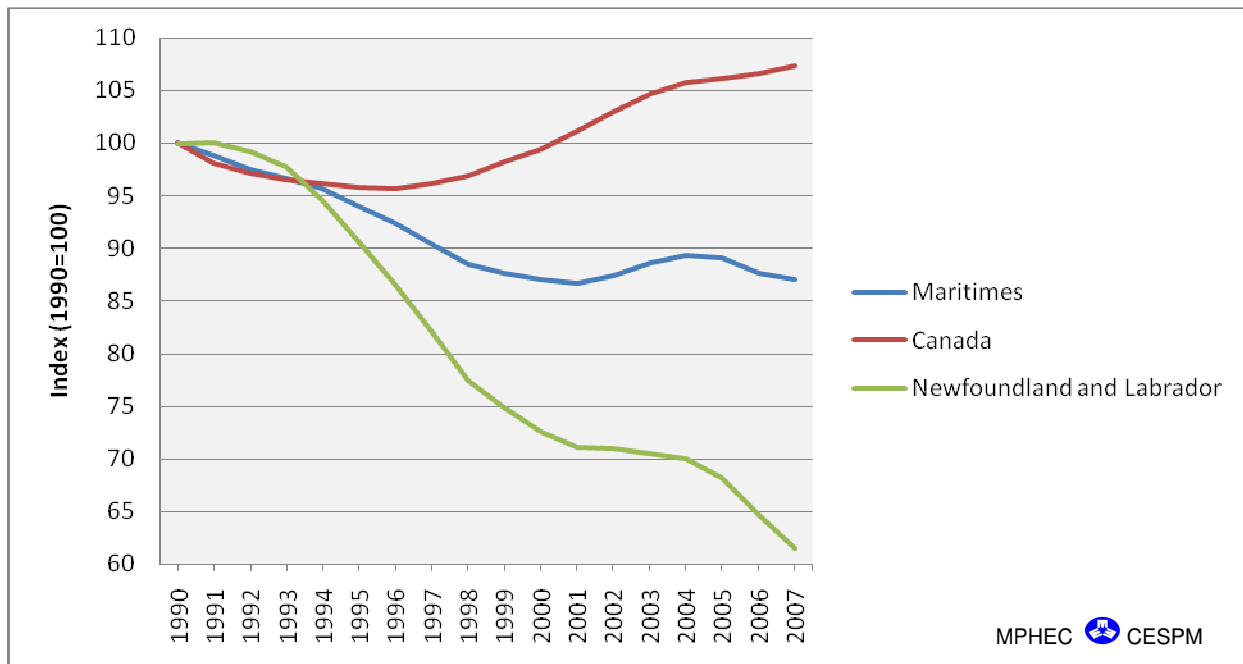
Source: MPHEC PSIS

Figure 3 Origin of undergraduate students from outside the Maritimes enrolled in Maritime Universities



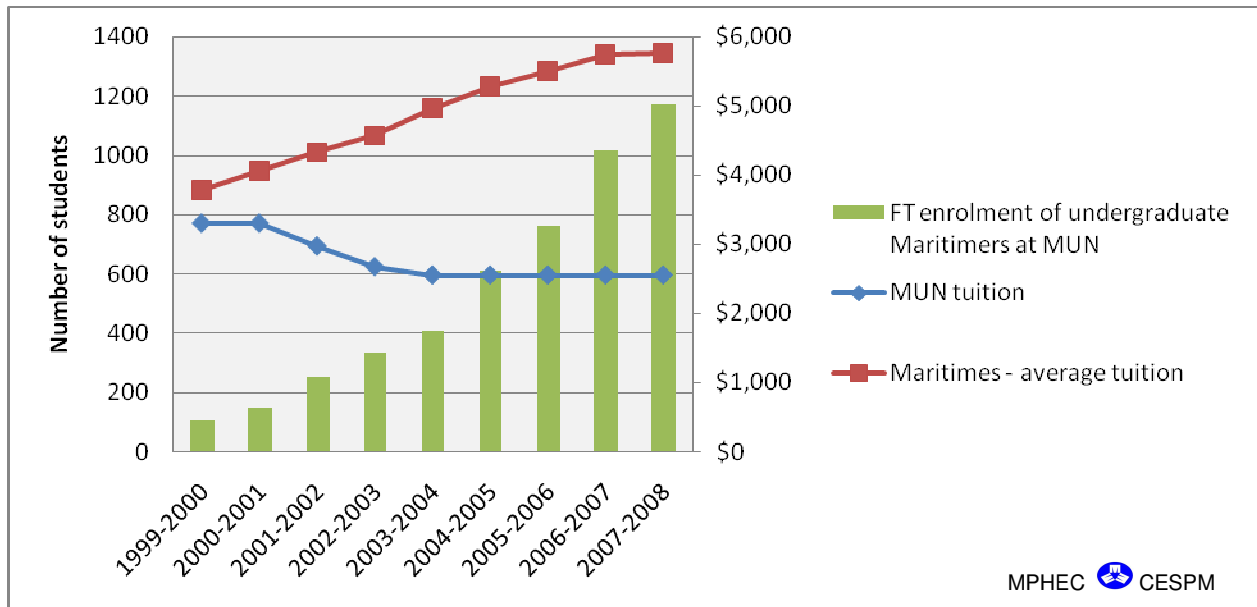
Source: MPHEC PSIS

Figure 4 Change in university-age population (18-24 year olds)



Source: Statistics Canada

Figure 5 Undergraduate students from the Maritimes enrolled full-time (FT) at the Memorial University of Newfoundland (MUN) and tuition fees



Source: Memorial University of Newfoundland Factbooks; Tuition: MPHEC and AAU

Figure 6a Participation rates in Maritime Universities
 All students enrolled full-time in universities from each province ÷ 18-24 age cohort in each province

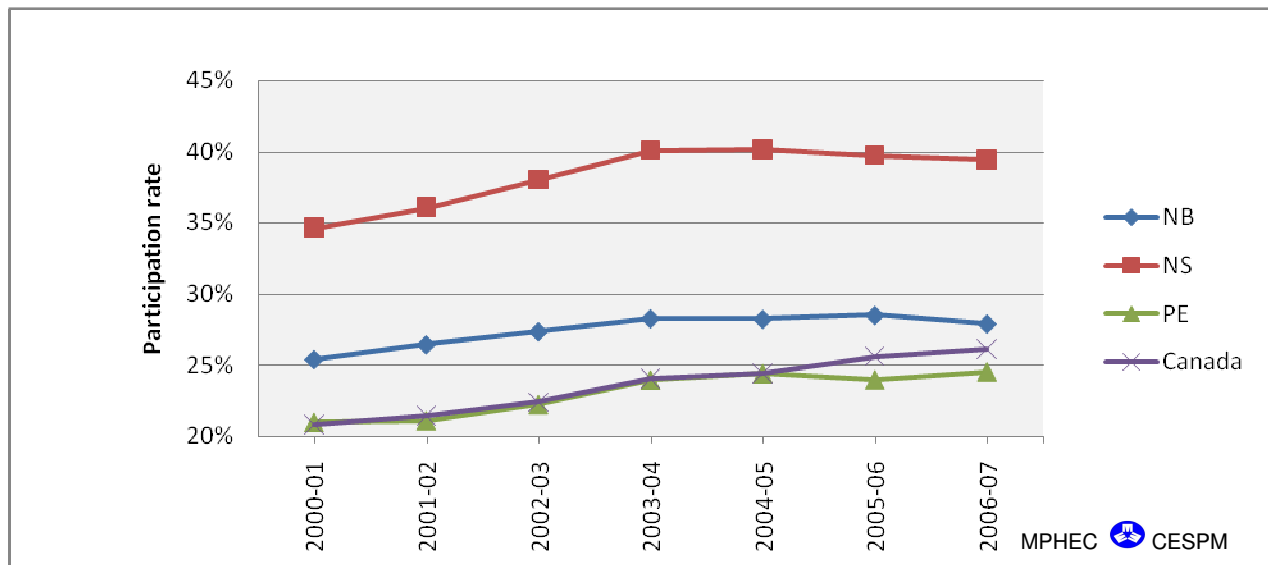
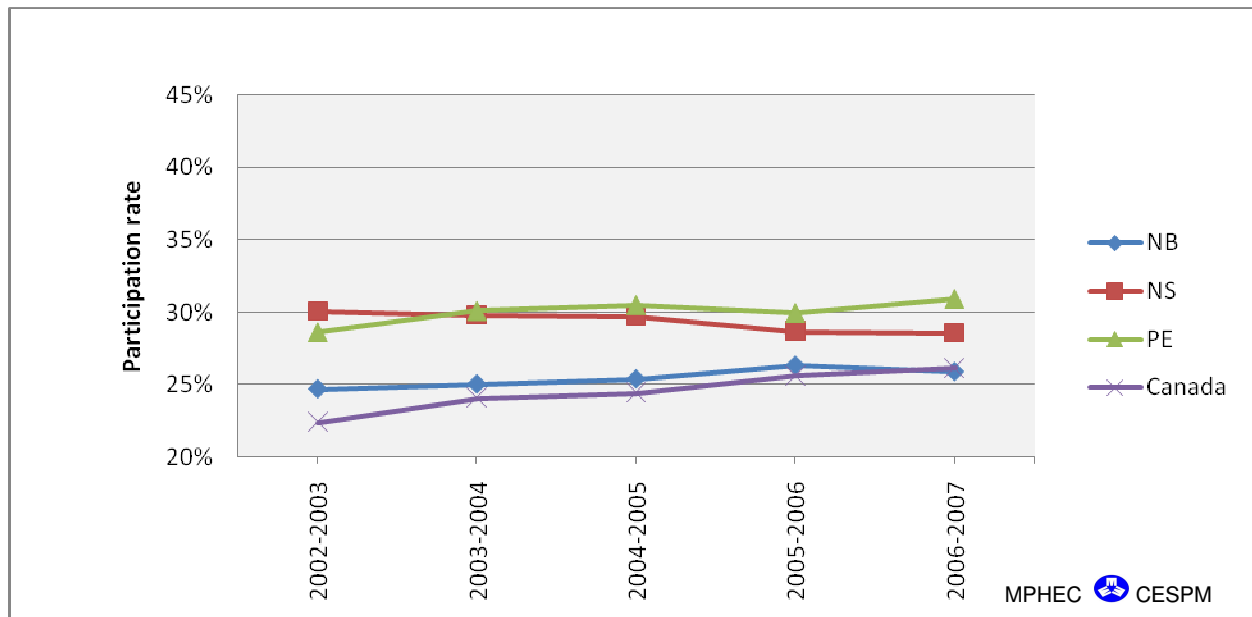
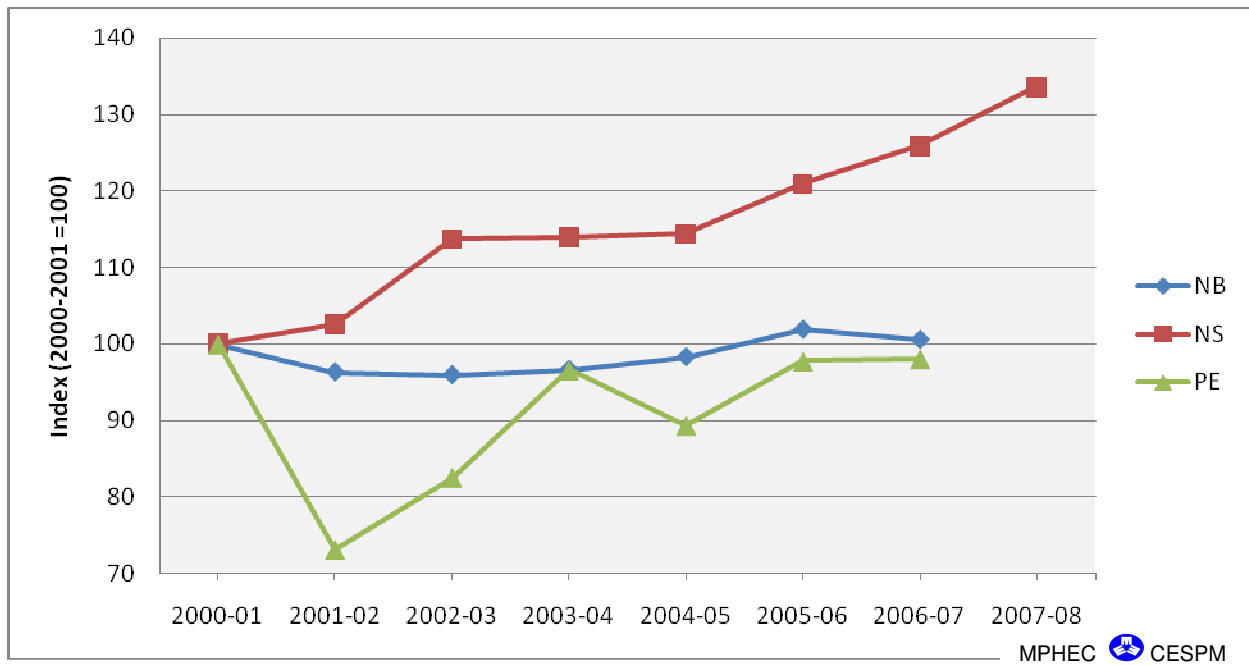


Figure 6b University participation rates of Maritime residents in Canadian Universities
 Residents of each province enrolled full-time in Canadian universities ÷ 18-24 age cohort in each province



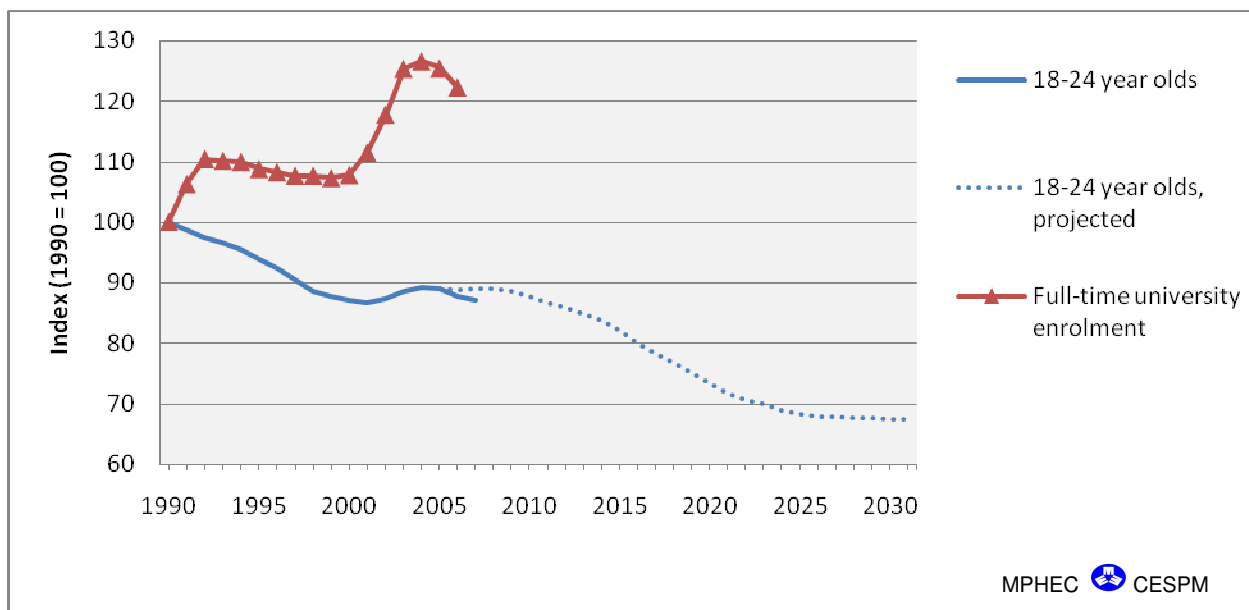
Source: MPHEC PSIS data; Population data, Statistics Canada; Enrolment in Canadian Universities, Statistics Canada PSIS (2000-2001 to 2004-2005) and AUCC (2005-2006 to 2006-2007)

Figure 7 Enrolment at Maritime community colleges



Source: NSCC; NBCC Annual Report; MPHEC PSIS data for PE: 2007-2008 data not yet available for New Brunswick and Prince Edward Island

Figure 8 University-age population and full-time enrolment in Maritime Universities (all-levels)



Source: Statistics Canada, Population Estimates, Nov. 2007; Projections, official post-censal estimates based on July 1, 2005 post-censal estimate, medium growth rate, medium migration trends scenario; Enrolment, MPHEC USIS data (1990 to 2000), PSIS data (2000 to 2006)

Table 1 Undergraduate Enrolment by Province and University in the Maritimes: 2000-2001 to 2006-2007 (includes full-time and part-time enrolment)

Province	Institution	Academic year						
		2000-2001	2001-2002	2002-2003	2003-2004	2004-2005	2005-2006	2006-2007
New Brunswick	Mount Allison University	2,523	2,602	2,491	2,489	2,313	2,320	2,286
	Saint Thomas University	2,718	2,785	3,031	3,102	3,135	3,046	2,778
	Université de Moncton	5,218	5,352	5,570	5,818	5,726	5,807	5,403
	University of New Brunswick	10,471	10,893	11,208	11,542	11,605	11,477	11,092
New Brunswick Total		20,930	21,632	22,300	22,951	22,779	22,650	21,559
Nova Scotia	Acadia University	4,145	4,121	3,954	4,329	3,894	3,836	3,611
	Cape Breton University	2,564	2,636	2,804	3,041	3,129	3,124	2,928
	Dalhousie University	9,507	10,120	10,867	11,475	11,813	11,617	11,535
	Mount Saint Vincent University	3,076	3,126	3,119	3,356	3,341	3,211	3,086
	Nova Scotia Agricultural College	492	454	458	486	534	550	566
	Nova Scotia College of Art and Design	827	915	986	1,014	988	992	1,011
	Saint Mary's University	6,372	6,558	7,066	7,589	7,605	7,483	7,025
	St Francis Xavier University	4,076	4,428	4,806	5,061	5,146	5,079	5,100
	Université Sainte-Anne	422	370	369	356	393	405	415
	University of King's College	875	896	940	1,037	1,102	1,135	1,112
Nova Scotia Total		32,356	33,624	35,369	37,744	37,945	37,432	36,389
Prince Edward Island	University of Prince Edward Island	3,193	3,197	3,392	3,696	3,821	3,686	3,769
Price Edward Island Total		3,193	3,197	3,392	3,696	3,821	3,686	3,769
Maritimes Total		56,479	58,453	61,061	64,391	64,545	63,768	61,717

Note: The Atlantic School of Theology no longer offers undergraduate programs
Source: MPHEC PSIS

Table 2 Full-time Equivalent (FTE) of Undergraduate Enrolment by Province and Maritime Institution: 2000-2001 to 2006-2007

Province	Institution	Academic Year						
		2000-2001	2001-2002	2002-2003	2003-2004	2004-2005	2005-2006	2006-2007
New Brunswick	Mount Allison University	2,298.3	2,377.3	2,317.9	2,314.4	2,177.8	2,184.7	2143.5
	St. Thomas University	2,447.8	2,619.9	2,831.1	2,897.4	2,903.2	2,821.1	2567.2
	Université de Moncton	4,249.8	4,457.1	4,507.0	4,703.8	4,745.3	4,790.4	4617.18
	University of New Brunswick	8,697.8	8,880.1	9,234.7	9,613.5	9,662.8	9,590.4	9241.3
New Brunswick Total		17,693.7	18,334.4	18,890.7	19,529.1	19,489.1	19,386.6	18569.18
Nova Scotia	Acadia University	3,717.7	3,762.5	3,793.5	3,990.7	3,654.9	3,557.8	3343.1
	Cape Breton University	2,098.6	2,199.2	2,355.7	2,556.5	2,604.7	2,614.7	2427.1
	Dalhousie University	8,533.2	8,990.8	9,746.4	10,420.2	10,739.8	10,446.5	10374.6
	Mount Saint Vincent University	2,332.1	2,406.0	2,394.6	2,585.6	2,555.8	2,527.4	2440.4
	Nova Scotia Agricultural College	474.1	425.7	430.8	449.1	476.5	523.2	503.8
	Nova Scotia College of Art & Design	692.8	721.8	786.3	774.3	764.5	832.2	859.9
	Saint Mary's University	5,387.1	5,544.8	6,059.3	6,572.7	6,654.9	6,571.1	6155.8
	St. Francis Xavier University	3,677.4	3,873.5	4,255.6	4,463.2	4,590.7	4,473.8	4492.1
	Université Sainte-Anne	320.8	309.5	303.0	321.0	343.5	339.9	357.8
	University of King's College	852.6	855.1	907.9	1,013.0	1,067.9	1,097.1	1080.1
Nova Scotia Total		28,140.7	29,147.6	31,085.7	33,194.1	33,493.8	33,035.0	32034.7
Prince Edward Island	University of Prince Edward Island	2,735.2	2,760.2	2,948.1	3,259.7	3,389.5	3,275.3	3261.7
Price Edward Island Total		2,735.2	2,760.2	2,948.1	3,259.7	3,389.5	3,275.3	3261.7
Maritimes Total		48,569.6	50,242.2	52,924.5	55,982.9	56,372.4	55,696.9	53865.58

Source: MPHEC PSIS

Table 3 Undergraduate enrolment by Province of study, Maritime institution, and permanent Province of origin: 2000-2001 to 2006-2007

Province of Study		Academic Year						
Institution	Province of origin	2000-2001	2001-2002	2002-2003	2003-2004	2004-2005	2005-2006	2006-2007
New Brunswick								
Mount Allison University	New Brunswick	887	907	937	946	882	908	921
	Nova Scotia	672	755	722	678	625	627	573
	Prince Edward Island	125	150	132	116	101	96	99
	Ontario	362	347	303	355	336	323	318
	Outside Canada	128	159	148	163	157	167	174
	Newfoundland and Labrador	117	76	47	42	33	25	32
	Other provinces and territories	205	206	201	184	178	172	169
	Unknown	27	2	1	5	1	2	
Mount Allison University Total		2,523	2,602	2,491	2,489	2,313	2,320	2,286
Saint Thomas University	New Brunswick	1,963	2,064	2,267	2,220	2,333	2,305	2,015
	Nova Scotia	401	389	424	450	403	398	394
	Prince Edward Island	87	94	79	107	97	79	80
	Ontario	52	43	52	84	76	79	75
	Outside Canada	38	8	37	58	60	62	113
	Newfoundland and Labrador	154	157	125	105	95	78	61
	Other provinces and territories	23	22	28	42	47	38	37
	Unknown		8	19	36	24	7	3
Saint Thomas University Total		2,718	2,785	3,031	3,102	3,135	3,046	2,778
Université de Moncton	New Brunswick	4,621	4,947	5,007	5,198	5,086	5,312	4,761
	Nova Scotia	52	44	49	59	66	63	73
	Prince Edward Island	29	30	40	39	31	38	29
	Ontario	33	24	27	28	28	31	28
	Outside Canada	247	60	176	212	237	46	213
	Newfoundland and Labrador	6	3	4	1	5	8	8
	Other provinces and territories	230	244	267	280	272	309	289
	Unknown				1	1		2
Université de Moncton Total		5,218	5,352	5,570	5,818	5,726	5,807	5,403

Province of Study		Academic Year						
Institution	Province of origin	2000-2001	2001-2002	2002-2003	2003-2004	2004-2005	2005-2006	2006-2007
University of New Brunswick	New Brunswick	7,854	8,091	7,891	7,853	7,851	7,843	7,703
	Nova Scotia	633	609	696	702	695	729	651
	Prince Edward Island	290	301	300	329	353	349	348
	Ontario	387	419	448	607	604	609	519
	Outside Canada	663	724	1,114	1,464	1,549	1,401	1,245
	Newfoundland and Labrador	375	337	317	301	282	250	235
	Other provinces and territories	226	247	272	286	271	296	294
	Unknown	43	165	170				97
University of New Brunswick Total		10,471	10,893	11,208	11,542	11,605	11,477	11,092
New Brunswick	New Brunswick	15,325	16,009	16,102	16,217	16,152	16,368	15,400
	Nova Scotia	1,758	1,797	1,891	1,889	1,789	1,817	1,691
	Prince Edward Island	531	575	551	591	582	562	556
	Ontario	834	833	830	1,074	1,044	1,042	940
	Outside Canada	1,076	951	1,475	1,897	2,003	1,676	1,745
	Newfoundland and Labrador	652	573	493	449	415	361	336
	Other provinces and territories	684	719	768	792	768	815	789
	Unknown	70	175	190	42	26	9	102
New Brunswick Total		20,930	21,632	22,300	22,951	22,779	22,650	21,559
Nova Scotia								
Acadia University	New Brunswick	293	270	240	265	239	213	210
	Nova Scotia	2,415	2,441	2,119	2,089	1,820	1,776	1,663
	Prince Edward Island	79	72	80	79	56	46	39
	Ontario	439	443	432	685	699	743	686
	Outside Canada	382	404	586	662	687	676	655
	Newfoundland and Labrador	312	256	236	192	117	91	66
	Other provinces and territories	223	235	261	279	276	291	292
	Unknown	2			78			
Acadia University Total		4,145	4,121	3,954	4,329	3,894	3,836	3,611

Province of Study		Academic Year						
Institution	Province of origin	2000-2001	2001-2002	2002-2003	2003-2004	2004-2005	2005-2006	2006-2007
Cape Breton University	New Brunswick	18	25	22	29	45	53	45
	Nova Scotia	2,354	2,386	2,550	2,691	2,706	2,626	2,413
	Prince Edward Island	3	6	9	11	10	10	17
	Ontario	25	39	51	63	79	83	87
	Outside Canada		53	75	120	165	220	222
	Newfoundland and Labrador	101	94	65	91	86	81	81
	Other provinces and territories	26	33	32	33	38	47	63
	Unknown	37			3		4	
Cape Breton University Total		2,564	2,636	2,804	3,041	3,129	3,124	2,928
Dalhousie University	New Brunswick	792	883	1,000	1,006	992	988	896
	Nova Scotia	5,861	6,184	6,426	6,190	6,187	6,049	6,002
	Prince Edward Island	233	279	291	283	284	265	274
	Ontario	1,075	1,178	1,448	2,182	2,413	2,483	2,640
	Outside Canada	496	485	578	690	812	795	762
	Newfoundland and Labrador	532	549	515	428	360	301	230
	Other provinces and territories	518	562	609	696	765	736	730
	Unknown							1
Dalhousie University Total		9,507	10,120	10,867	11,475	11,813	11,617	11,535
Mount Saint Vincent University	New Brunswick	99	91	83	84	73	105	102
	Nova Scotia	2,623	2,628	2,812	2,952	2,782	2,611	2,460
	Prince Edward Island	24	36	17	13	22	20	30
	Ontario	41	39	5	20	13	43	65
	Outside Canada	93	117	156	206	344	315	333
	Newfoundland and Labrador	117	130	38	51	85	76	63
	Other provinces and territories	37	32	7	27	18	34	32
	Unknown	42	53	1	3	4	7	1
Mount Saint Vincent University Total		3,076	3,126	3,119	3,356	3,341	3,211	3,086

Province of Study		Academic Year						
Institution	Province of origin	2000-2001	2001-2002	2002-2003	2003-2004	2004-2005	2005-2006	2006-2007
Nova Scotia Agricultural College	New Brunswick	74	78	70	71	68	70	69
	Nova Scotia	332	300	323	342	381	394	395
	Prince Edward Island	29	25	21	22	25	25	25
	Ontario	5	8	2	5	13	11	2
	Outside Canada	11	13	8	16	17	17	39
	Newfoundland and Labrador	39	28	29	26	22	24	27
	Other provinces and territories	2	2	5	4	8	9	9
	Unknown							
Nova Scotia Agricultural College Total		492	454	458	486	534	550	566
Nova Scotia College of Art and Design	New Brunswick	66	56	53	61	45	61	63
	Nova Scotia	399	469	506	536	524	481	535
	Prince Edward Island	10	10	11	15	12	14	21
	Ontario	163	183	216	200	208	202	193
	Outside Canada	40	43	64	65	56	26	22
	Newfoundland and Labrador	60	60	43	36	23	21	25
	Other provinces and territories	89	94	93	101	106	120	114
	Unknown					14	67	38
Nova Scotia College of Art and Design Total		827	915	986	1,014	988	992	1,011
Saint Mary's University	New Brunswick	253	280	361	383	414	370	406
	Nova Scotia	5,253	5,329	5,701	5,994	5,962	5,358	5,134
	Prince Edward Island	87	103	101	108	109	103	109
	Ontario	176	170	200	318	324	290	355
	Outside Canada	349	407	377	472	523	1,184	652
	Newfoundland and Labrador	173	194	221	193	152	74	73
	Other provinces and territories	81	75	105	121	121	103	110
	Unknown						1	186
Saint Mary's University Total		6,372	6,558	7,066	7,589	7,605	7,483	7,025

Province of Study		Academic Year						
Institution	Province of origin	2000-2001	2001-2002	2002-2003	2003-2004	2004-2005	2005-2006	2006-2007
St Francis Xavier University	New Brunswick	203	249	271	322	350	373	404
	Nova Scotia	2,841	2,903	3,004	3,099	3,113	2,944	2,873
	Prince Edward Island	114	110	141	155	165	156	155
	Ontario	292	493	611	728	759	820	840
	Outside Canada	157	149	185	216	224	214	266
	Newfoundland and Labrador	285	271	230	186	167	136	129
	Other provinces and territories	175	248	304	345	357	427	422
	Unknown	9	5	60	10	11	9	11
St Francis Xavier University Total		4,076	4,428	4,806	5,061	5,146	5,079	5,100
Université Sainte-Anne	New Brunswick	28	22	30	33	35	35	30
	Nova Scotia	323	285	279	255	285	301	314
	Prince Edward Island	8	8	7	8	5	6	13
	Ontario	5	6	3	5	6	4	3
	Outside Canada	7	10	2	3	17	13	23
	Newfoundland and Labrador	40	29	28	29	30	34	25
	Other provinces and territories	11	10	8	14	12	8	5
	Unknown			12	9	3	4	2
Université Sainte-Anne Total		422	370	369	356	393	405	415
University of King's College	New Brunswick	40	38	42	46	57	56	53
	Nova Scotia	418	429	440	437	449	449	462
	Prince Edward Island	31	27	24	17	25	21	19
	Ontario	270	292	344	416	428	464	434
	Outside Canada	19	28	23	41	53	53	52
	Newfoundland and Labrador	28	25	16	11	15	15	13
	Other provinces and territories	69	57	51	69	74	77	79
	Unknown					1		
University of King's College Total		875	896	940	1,037	1,102	1,135	1,112

Province of Study		Academic Year						
Institution	Province of origin	2000-2001	2001-2002	2002-2003	2003-2004	2004-2005	2005-2006	2006-2007
Nova Scotia	New Brunswick	1,866	1,992	2,172	2,300	2,318	2,324	2,278
	Nova Scotia	22,819	23,354	24,160	24,585	24,209	22,989	22,251
	Prince Edward Island	618	676	702	711	713	666	702
	Ontario	2,491	2,851	3,312	4,622	4,942	5,143	5,305
	Outside Canada	1,554	1,709	2,054	2,491	2,898	3,513	3,026
	Newfoundland and Labrador	1,687	1,636	1,421	1,243	1,057	853	732
	Other provinces and territories	1,231	1,348	1,475	1,689	1,775	1,852	1,856
	Unknown	90	58	73	103	33	92	239
Nova Scotia Total		32,356	33,624	35,369	37,744	37,945	37,432	36,389
Prince Edward Island								
University of Prince Edward Island	New Brunswick	181	156	160	180	161	152	151
	Nova Scotia	217	205	232	223	241	222	211
	Prince Edward Island	2,477	2,545	2,674	2,919	3,002	2,896	2,987
	Ontario	65	63	66	93	99	94	88
	Outside Canada	87	111	127	146	182	203	226
	Newfoundland and Labrador	90	73	74	72	67	60	40
	Other provinces and territories	48	43	59	63	69	59	66
	Unknown	28	1					
University of Prince Edward Island Total		3,193	3,197	3,392	3,696	3,821	3,686	3,769
Prince Edward Island Total		3,193	3,197	3,392	3,696	3,821	3,686	3,769
Maritimes	New Brunswick	17,372	18,157	18,434	18,697	18,631	18,844	17,829
	Nova Scotia	24,794	25,356	26,283	26,697	26,239	25,028	24,153
	Prince Edward Island	3,626	3,796	3,927	4,221	4,297	4,124	4,245
	Ontario	3,390	3,747	4,208	5,789	6,085	6,279	6,333
	Outside Canada	2,717	2,771	3,656	4,534	5,083	5,392	4,997
	Newfoundland and Labrador	2,429	2,282	1,988	1,764	1,539	1,274	1,108
	Other provinces and territories	1,963	2,110	2,302	2,544	2,612	2,726	2,711
	Unknown	188	234	263	145	59	101	341
Grand Total		56,479	58,453	61,061	64,391	64,545	63,768	61,717

Source: MPHEC PSIS

Table 4 Enrolment of Maritimers in 48 Canadian universities: 2002-2003 to 2006-2007

Province of University (# of universities in sample/ # of universities in province)	Academic Year					Δ 2002-2003 to 2006-2007 %	Δ 2005-2006 to 2006-2007 %
	2002-2003	2003-2004	2004-2005	2005-2006	2006-2007		
Ontario (21/21)	2,020	1,905	1,941	2,034	2,181	8%	7%
Québec (5/16)*	1,012	1,030	1,111	1,135	1,138	12%	0%
Newfoundland and Labrador (1/1)	334	494	682	859	1,132	239%	32%
Alberta (3/4)	215	214	239	247	298	39%	21%
British Columbia (2/6)	119	114	111	114	143	20%	25%
Saskatchewan (1/2)	31	21	12	13	20	-35%	54%
Total studying outside the region	3,731	3,778	4,096	4,402	4,912	32%	12%
New Brunswick (4/4)	18,544	18,697	18,523	18,747	17,647	-5%	-6%
Nova Scotia (10/11)**	27,034	27,596	27,240	25,979	25,231	-7%	-3%
Prince Edward Island (1)	3,066	3,322	3,404	3,270	3,349	9%	2%
Total studying in the Maritimes	48,644	49,615	49,167	47,996	46,227	-5%	-4%

Source: data compiled from individual university sources (publicly funded universities only, does not include universities colleges); MPHEC PSIS data for Maritime universities; Only full-time undergraduate students are included when the breakdown is possible; Based on Statistics Canada's PSIS data (2004-2005) universities and provinces with the largest enrolment of Maritimers have been sampled.

*Includes graduate students for some universities

**The Atlantic School of Theology offers graduate programs only and is therefore not included.

Table 5 Full-time undergraduate enrolment at the Memorial University of Newfoundland by Province of origin: 1997-1998 to 2007-2008

Province of origin	Academic Year										
	1997-1998	1998-1999	1999-2000	2000-2001	2001-2002	2002-2003	2003-2004	2004-2005	2005-2006	2006-2007	2007-2008
New Brunswick	40	29	24	36	63	92	107	127	152	207	219
Nova Scotia	58	65	64	92	163	214	258	432	540	725	864
Prince Edward Island	8	18	15	17	24	28	41	51	68	82	87
Maritimes total	106	112	103	145	250	334	406	610	760	1,014	1,170
Newfoundland and Labrador	11,699	11,640	11,541	11,630	11,317	11,477	11,587	11,528	11,233	10,572	10,398
Total Full-time undergraduate	12,223	12,133	12,090	12,239	12,237	12,562	12,938	13,011	13,184	12,809	12,634

Source: The Memorial University of Newfoundland Factbooks

Table 6a **Participations Rate of University Students at Maritime Institutions**
 Participation rate = Total full-time enrolment at all levels in the province's university ÷ provincial 18-24 cohort

	New Brunswick	Nova Scotia	Prince Edward Island	Canada
2000-01	25.4%	34.6%	21.0%	20.8%
2001-02	26.5%	36.1%	21.1%	21.5%
2002-03	27.4%	38.0%	22.2%	22.4%
2003-04	28.3%	40.1%	24.0%	24.1%
2004-05	28.2%	40.2%	24.4%	24.4%
2005-06	28.5%	39.7%	24.0%	25.6%
2006-07	27.9%	39.4%	24.5%	26.1%

Table 6b **Maritime Resident Participation Rate at 48 of 61 Canadian Universities**
 Participation rate = Total full-time enrolment at all levels of Maritime residents in Canadian universities ÷ provincial 18-24 cohort

	New Brunswick	Nova Scotia	Prince Edward Island
2002-03	24.7%	30.1%	28.7%
2003-04	25.0%	29.8%	30.1%
2004-05	25.4%	29.7%	30.5%
2005-06	26.3%	28.7%	30.0%
2006-07	25.9%	28.6%	31.0%

Sources: Maritime University Enrolment MPHEC PSIS; Enrolment in Canadian Universities: (2000-01 to 2004-05) Statistics Canada PSIS; 2005-06, 2006-07 Association of Universities and Colleges of Canada (AUCC). Maritime residents in Canadian universities outside the region obtained from multiple sources, not complete.